



home

location | quick facts

labor force

demographics

education

business district

taxes | incentives

quality of life

transportation

utilities

key industries

commercial properties



Welcome

The city council, city clerk, city manager and myself are extremely pleased to offer you this valuable resource. Our primary economic development focus is to bring new business to our City.

Your inquiries will be greatly appreciated and we look forward to hearing from you.

Mayor Guy Thompson

sub-navigation

<< back    next >>

[ exit ]



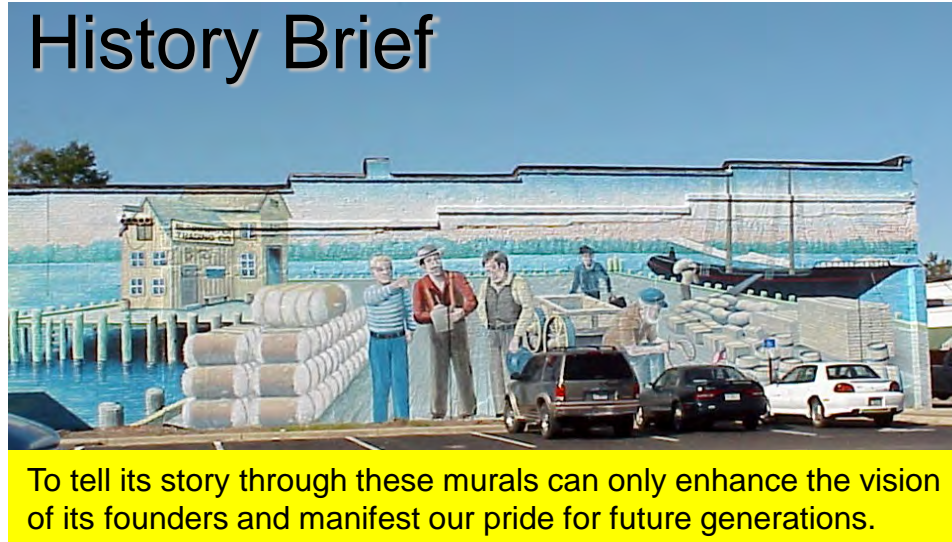
- home
- location | quick facts
- labor force
- demographics
- education
- business district
- taxes | incentives
- quality of life
- transportation
- utilities
- key industries
- commercial properties



Zip Code	32570	32571	32583	total
Population	24,095	23,892	17,400	65,387
Households	9,246	8,603	6,676	24,525



## History Brief



Milton, Florida Established in 1825 as a trading post on the Blackwater River, Milton has always maintained strong ties to its natural resources. The Arcadia Mill site established its place as antebellum Florida's first industrial complex with a water-powered saw mill, textile factory, ironstone rock quarry, gristmill, bucket and shingle factory and even an experimental silkworm cocoonery!

The introduction of steam power enhanced the lumber industry as well as burgeoning ship building, brick-making, fishing and agricultural interests. In 1941, World War II needed additional air training facilities, and Naval Air Station Whiting Field was born north of Milton. Industries and population have increased over the years in Santa Rosa County, but Milton has retained an old world charm that beckons the visitor.

- home
- location | quick facts
- labor force
- demographics
- education
- business district
- taxes | incentives
- quality of life
- transportation
- utilities
- key industries
- commercial properties

sub-navigation

<< back    next >>

[ exit ]



# Labor force

<b>Milton City Limits</b>	<b>2000</b>	<b>2005</b>
Age 16 + Population	4,884	5,093
Percentage Employed	53	53
Percentage Unemployed	4	4
Percent Not in the labor force	38	38

## Area Civilian Labor Force

Santa Rosa County	53,747
Escambia County	125,326
Okaloosa County	83,308
<b>TOTAL</b>	<b>262,381</b>

[home](#)[location | quick facts](#)[labor force](#)[demographics](#)[education](#)[business district](#)[taxes | incentives](#)[quality of life](#)[transportation](#)[utilities](#)[key industries](#)[commercial properties](#)[sub-navigation](#)[<< back](#)   [next >>](#)[\[ exit \]](#)



# Major Employers & Number of Employees

[home](#)

[location](#) | [quick facts](#)

[labor force](#)

[demographics](#)

[education](#)

[business district](#)

[taxes](#) | [incentives](#)

[quality of life](#)

[transportation](#)

[utilities](#)

[key industries](#)

[commercial properties](#)

<b>Wal-Mart - Retail</b>	<b>1,161</b>	<b>Sterling Fibers Acrylic Fibers</b>	<b>275</b>
<b>Santa Rosa County School District</b>	<b>3,000</b>	<b>Mold-Ex/Southland Technologies Rubber Products</b>	<b>241</b>
<b>US Government</b>	<b>1,999</b>	<b>Air Products &amp; Chemicals Chemicals</b>	<b>198</b>
<b>Santa Rosa County</b>	<b>867</b>	<b>Specialty Windows of FL Window manufacturer</b>	<b>125</b>
<b>State of Florida</b>	<b>723</b>	<b>City of Milton</b>	<b>120</b>
<b>Baptist Health Systems Healthcare</b>	<b>850</b>	<b>Anderson Columbia Company, Inc. Asphalt</b>	<b>100</b>
<b>Raytheon Aircraft Maintenance</b>	<b>424</b>	<b>Emerald Coast Interiors Boat Cushions</b>	<b>90</b>
<b>Santa Rosa Medical Center Healthcare</b>	<b>350</b>		
<b>TRX Fulfillment Services Call Center</b>	<b>300</b>		

sub-navigation

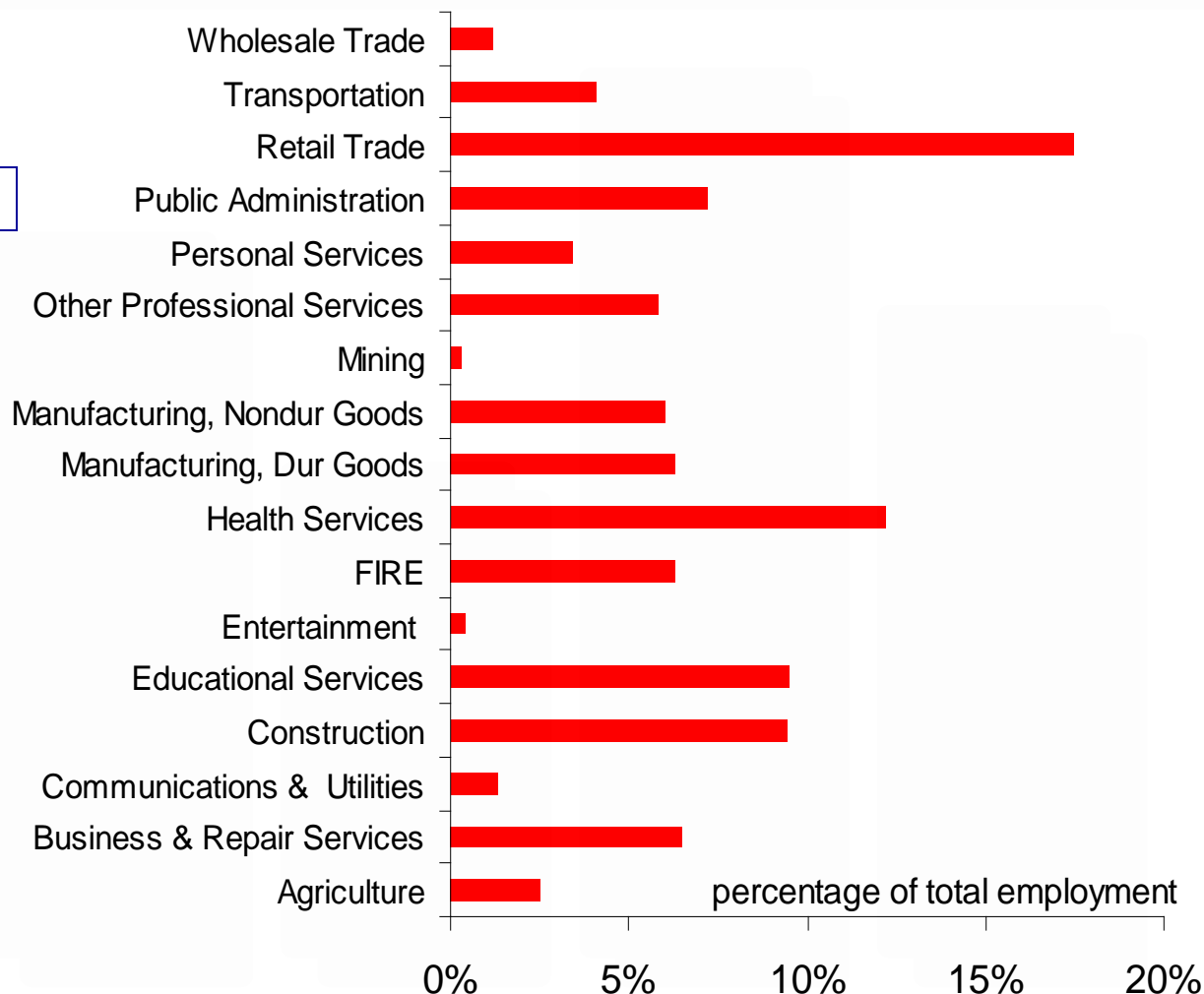
[<< back](#)   [next >>](#)

[\[ exit \]](#)





# Employment in Milton 2000



- home
- location | quick facts
- labor force**
- demographics
- education
- business district
- taxes | incentives
- quality of life
- transportation
- utilities
- key industries
- commercial properties

sub-navigation

<< back   next >>  
[ exit ]



- home
- location | quick facts
- labor force
- demographics
- education
- business district
- taxes | incentives
- quality of life
- transportation
- utilities
- key industries
- commercial properties

sub-navigation

<< back   next >>

[ exit ]

# Demographics

## Santa Rosa County Population

City of Milton
City of Gulf Breeze
Town of Jay
Unincorporated areas
<b>Total</b>

7,045
5,665
579
104,454
<b>117,743</b>

<b>Santa Rosa County</b>
Population Projections:
Year 2005
Year 2010
Pensacola/Milton
<b>MSA Population</b>

148,700
176,300
<b>412,153</b>





- home
- location | quick facts
- labor force
- demographics
- education
- business district
- taxes | incentives
- quality of life
- transportation
- utilities
- key industries
- commercial properties

# Demographics

## Average Household Income:

Estimated 2001 \$44,868

## Per Capita Income:

Estimated 2001 \$17,008



## Zip Code Population/Demographic

		10 Mile Radius
<b>Navarre</b>	32566	15,147
<b>Milton</b>	32570	30,584
<b>Milton/Pace</b>	32571	25,306
<b>Milton</b>	32583	20,323
<b>Gulf Breeze</b>	32561	30,056
<b>Jay</b>	32565	6,943

sub-navigation

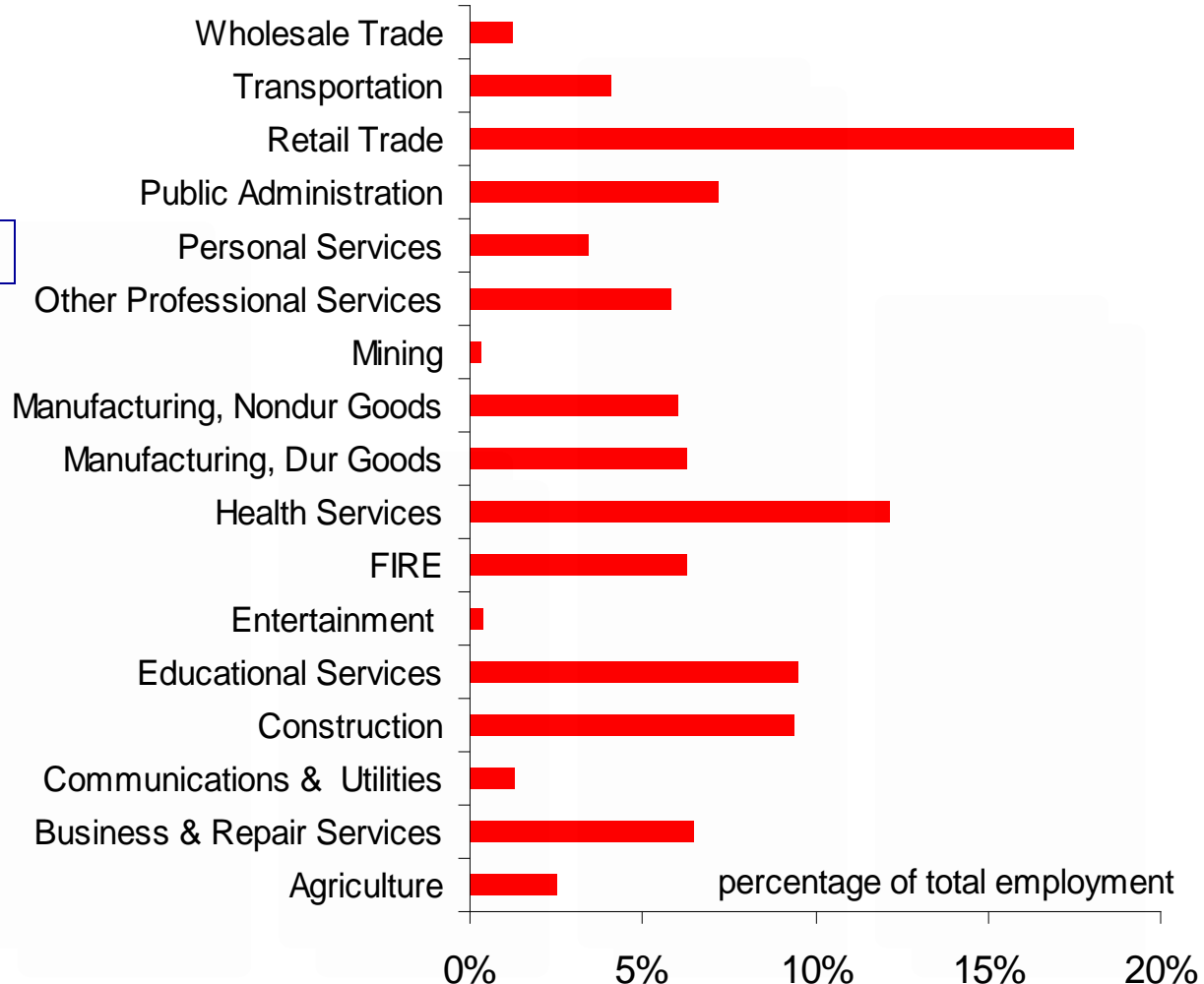
<< back    next >>  
[ exit ]





# Employment in Milton 2000

- home
- location | quick facts
- labor force
- demographics
- education
- business district
- taxes | incentives
- quality of life
- transportation
- utilities
- key industries
- commercial properties



sub-navigation

<< back next >>

[ exit ]



# Educational Attainment

[home](#)

[location | quick facts](#)

[labor force](#)

[demographics](#)

[education](#)

[business district](#)

[taxes | incentives](#)

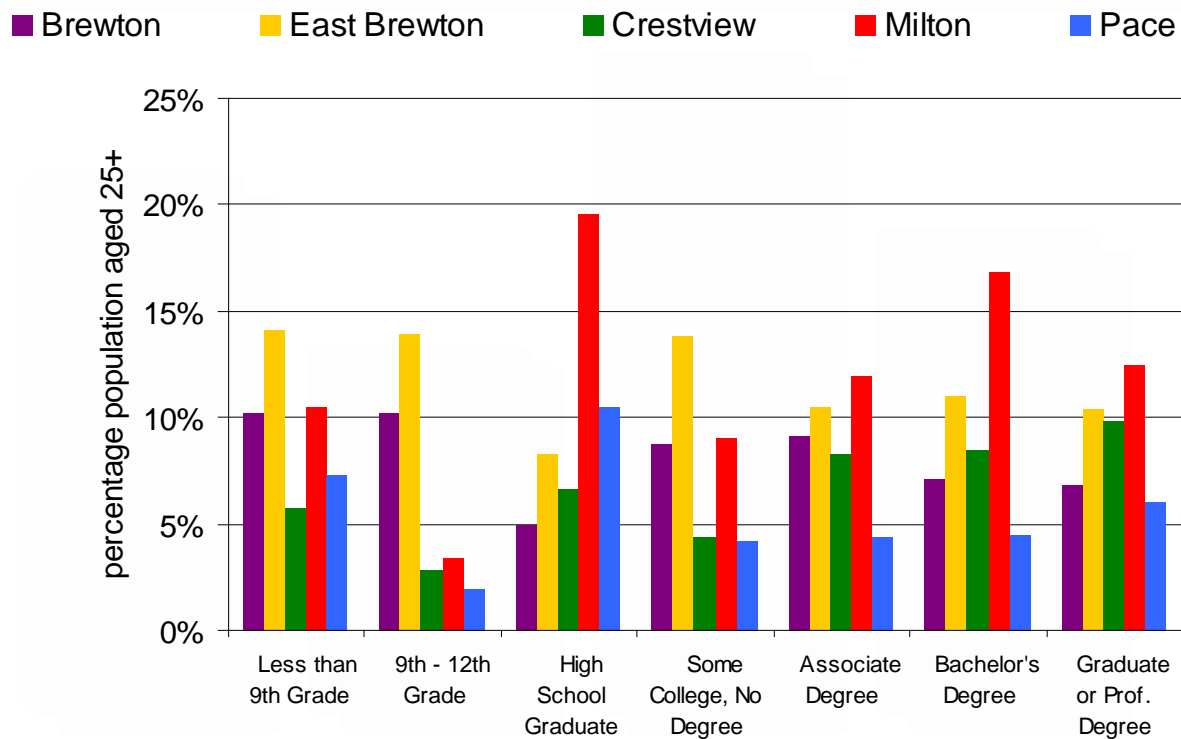
[quality of life](#)

[transportation](#)

[utilities](#)

[key industries](#)

[commercial properties](#)



sub-navigation

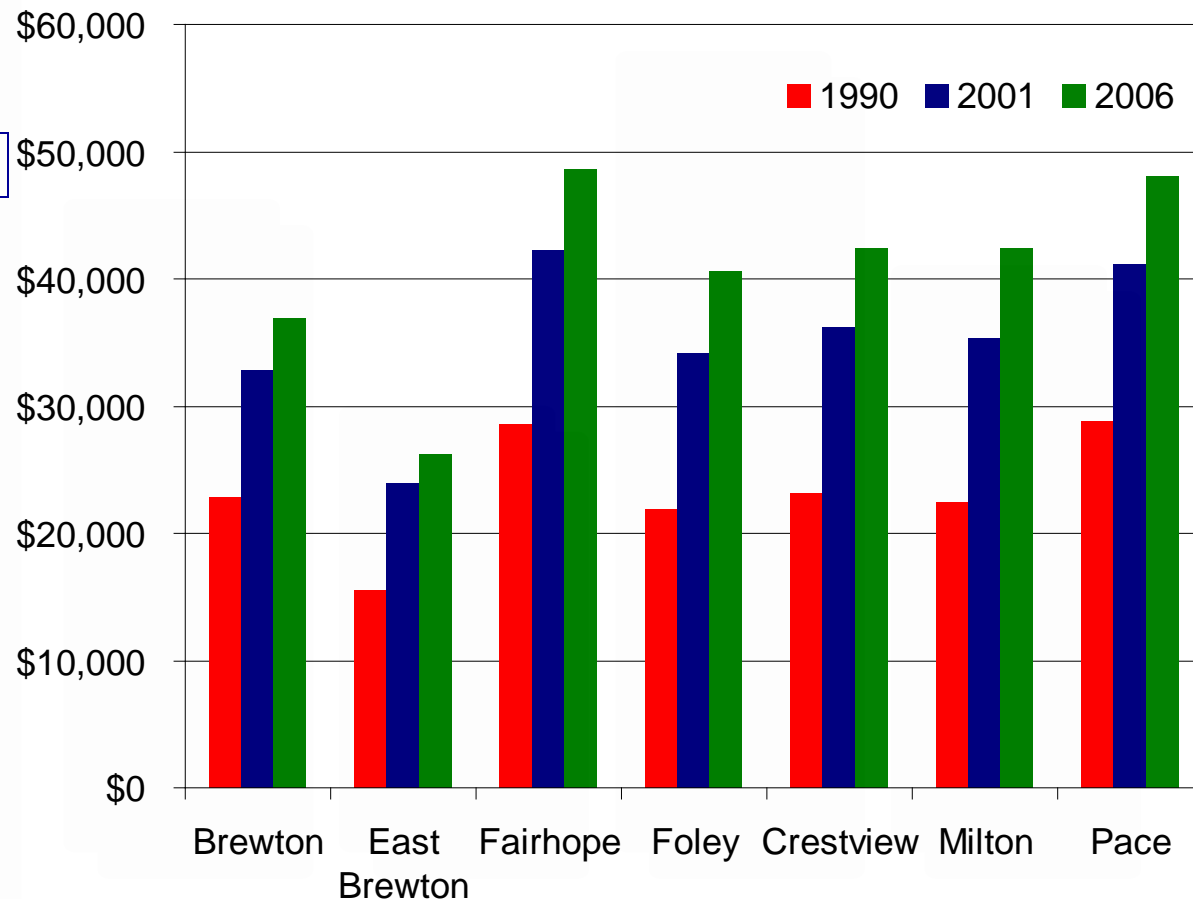
[<< back](#)   [next >>](#)

[\[ exit \]](#)



# Median Household Income

- home
- location | quick facts
- labor force
- demographics
- education
- business district
- taxes | incentives
- quality of life
- transportation
- utilities
- key industries
- commercial properties



sub-navigation

<< back    next >>

[ exit ]



# Population Density

[home](#)

[location](#) | [quick facts](#)

[labor force](#)

[demographics](#)

[education](#)

[business district](#)

[taxes](#) | [incentives](#)

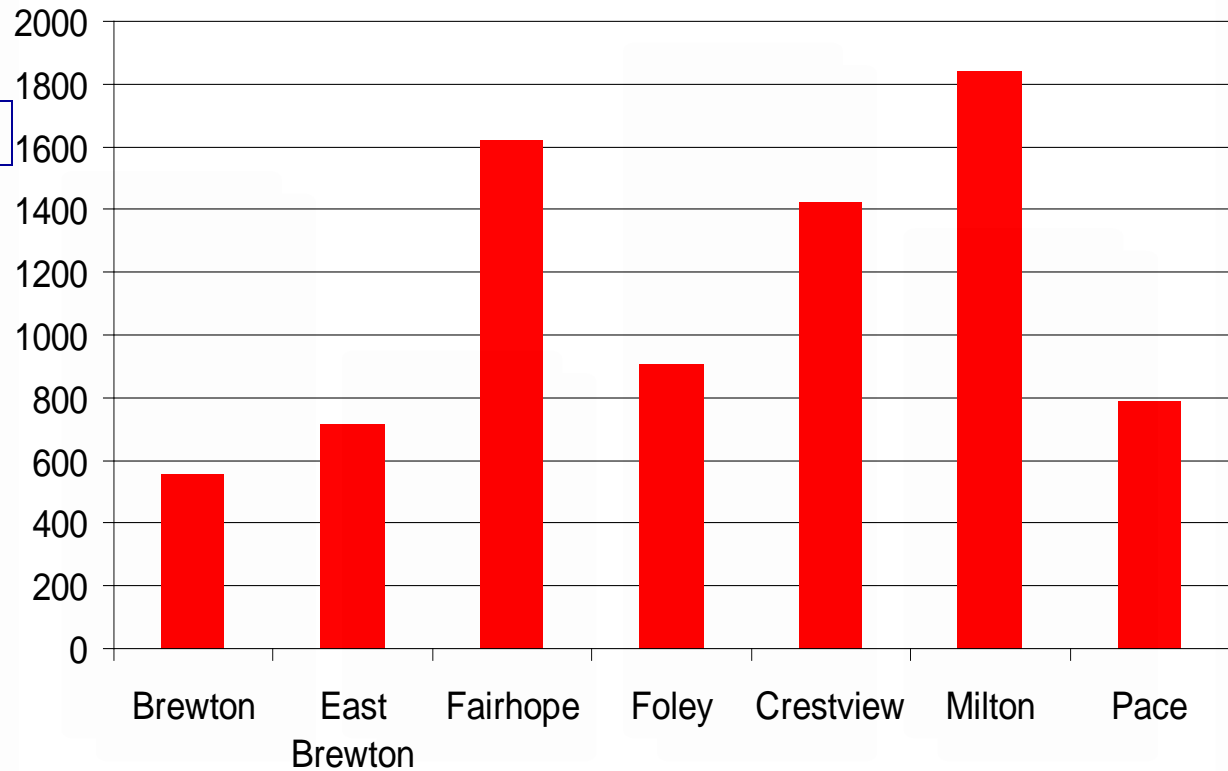
[quality of life](#)

[transportation](#)

[utilities](#)

[key industries](#)

[commercial properties](#)



sub-navigation

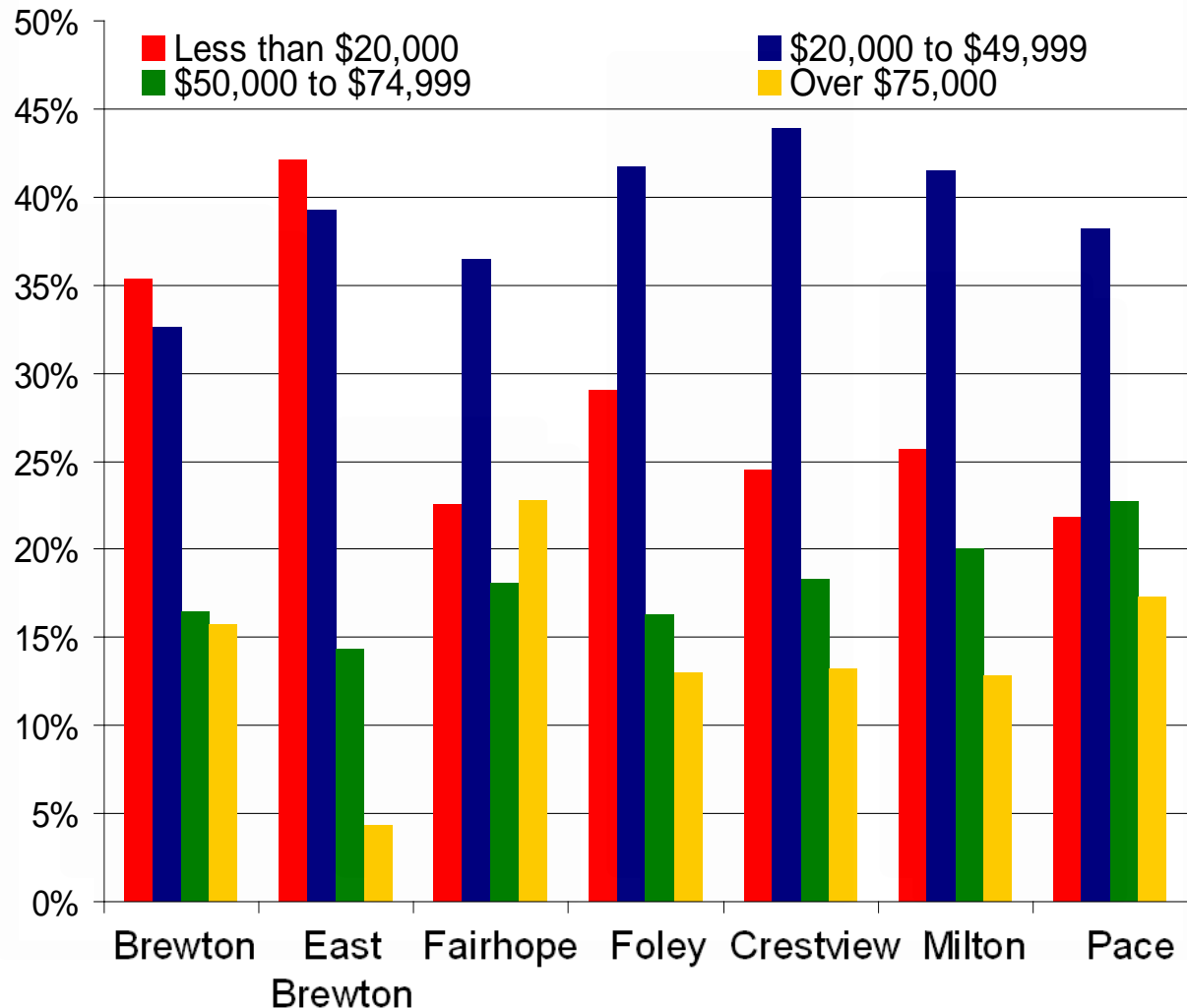
[<< back](#)   [next >>](#)

[\[ exit \]](#)



# Income Comparisons 2001

- home
- location | quick facts
- labor force
- demographics
- education
- business district
- taxes | incentives
- quality of life
- transportation
- utilities
- key industries
- commercial properties



sub-navigation

<< back   next >>  
[ exit ]



# Employment Comparison

home

location | quick facts

labor force

demographics

education

business district

taxes | incentives

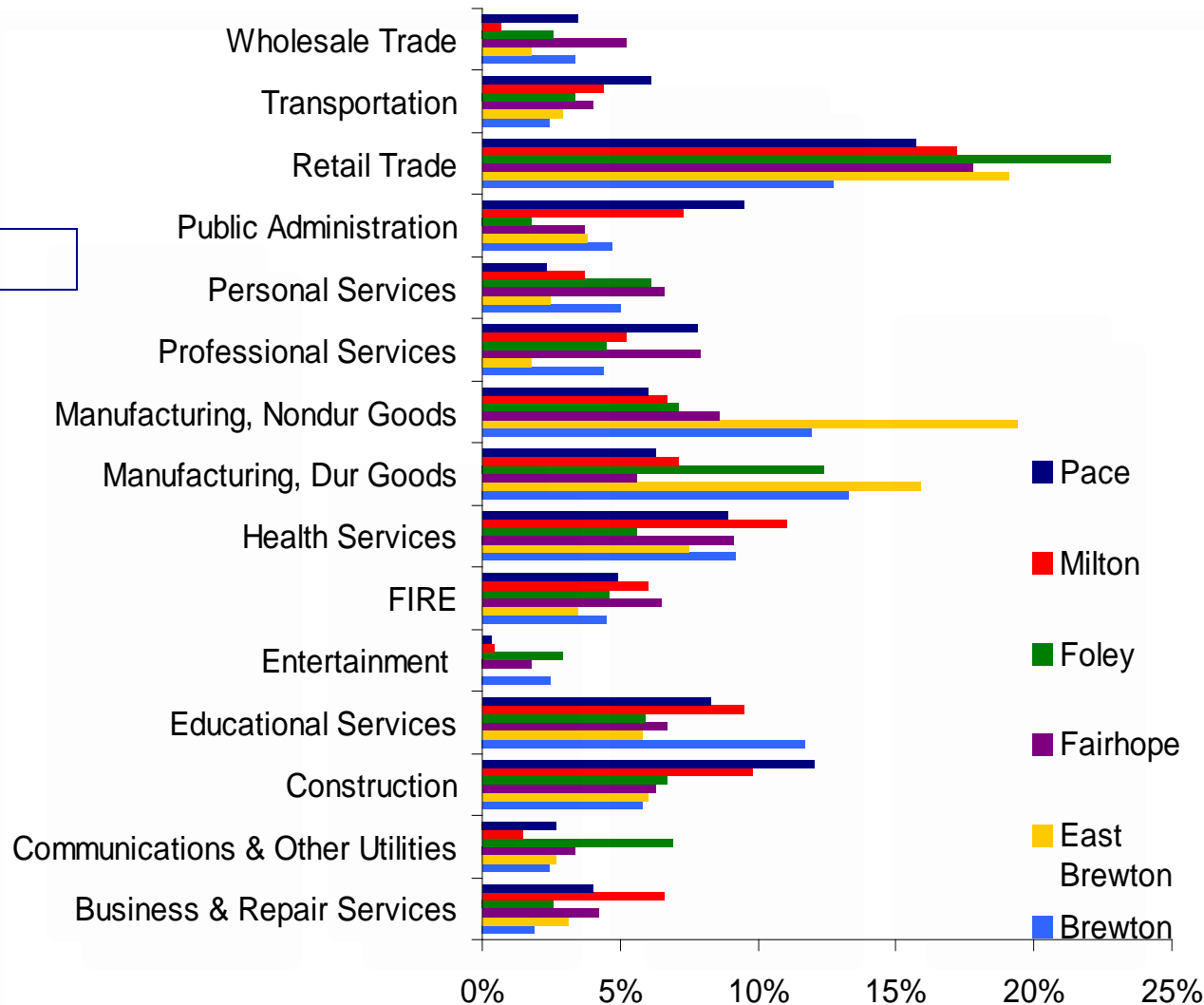
quality of life

transportation

utilities

key industries

commercial properties



sub-navigation

<< back   next >>

[ exit ]





# Education



kids' sports

[home](#)

[location](#) | [quick facts](#)

[labor force](#)

[demographics](#)

[education](#)

[business district](#)

[taxes](#) | [incentives](#)

[quality of life](#)

[transportation](#)

[utilities](#)

[key industries](#)

[commercial properties](#)

## Santa Rosa County School District

- Public High School ACT Scores: 21.4
- Average SAT Scores: 1056
- Teacher Ratio - 16.7/1
- Locklin Technical Center  
Current Enrollment: Approximately 500  
in Workforce Development Programs

sub-navigation

[<< back](#)   [next >>](#)

[\[ exit \]](#)



# Educational Attainment

[home](#)

[location | quick facts](#)

[labor force](#)

[demographics](#)

[education](#)

[business district](#)

[taxes | incentives](#)

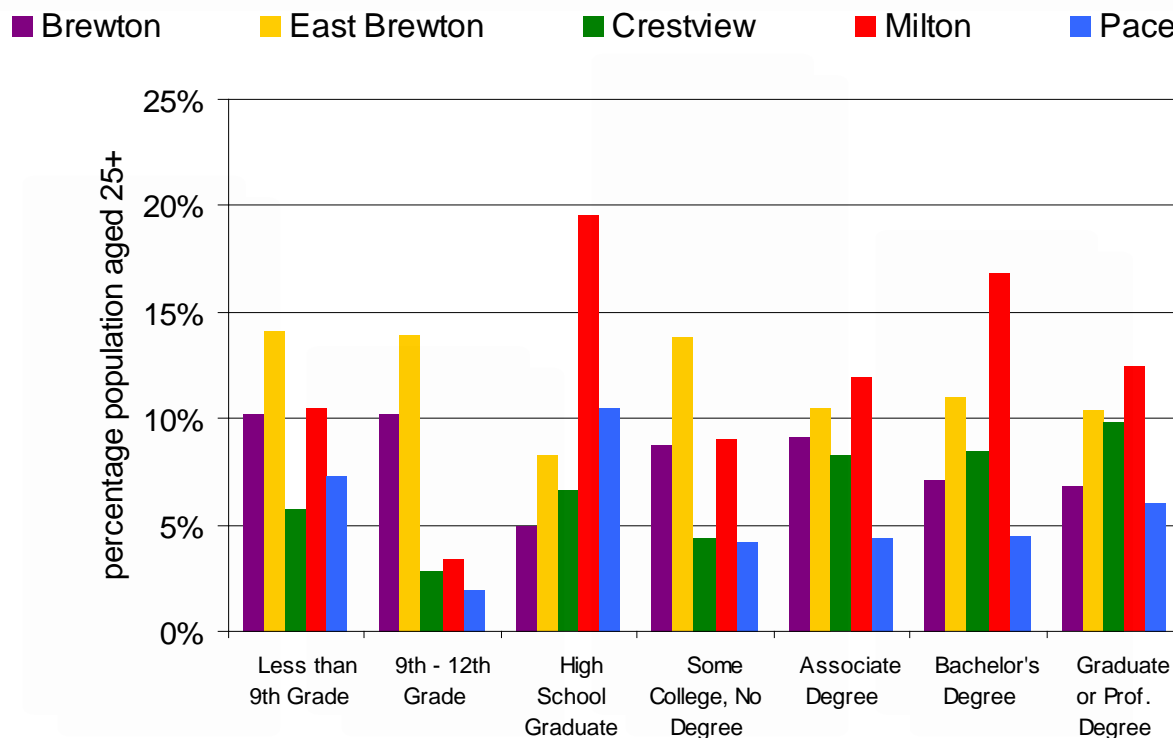
[quality of life](#)

[transportation](#)

[utilities](#)

[key industries](#)

[commercial properties](#)



sub-navigation

[<< back](#) [next >>](#)

[\[ exit \]](#)



# Higher Education

- home
- location | quick facts
- labor force
- demographics
- education
- business district
- taxes | incentives
- quality of life
- transportation
- utilities
- key industries
- commercial properties

## Colleges / Universities

	Full-time Enrollment
University of West Florida	10,000
University of Florida	55
Troy State University	2,475
Pensacola Christian College	4,200
	Total Part-time Enrollment
Pensacola Junior College	30,724
Locklin Technical Center	1,600



# Pensacola Junior College & Univ. of Florida Milton Campus



[home](#)

[location | quick facts](#)

[labor force](#)

[demographics](#)

[education](#)

[business district](#)

[taxes | incentives](#)

[quality of life](#)

[transportation](#)

[utilities](#)

[key industries](#)

[commercial properties](#)

The Pensacola Junior College, Milton Campus, is conveniently located.

UF also has a branch campus at the PJC Milton campus.

sub-navigation

[<< back](#)   [next >>](#)

[\[ exit \]](#)



# Higher Education



**UWF** offers majors in business, arts, science, professional studies, and education.

Athletics, performing arts, and other activities supply entertainment for students, faculty and staff, alumni, and community members.

[home](#)

[location](#) | [quick facts](#)

[labor force](#)

[demographics](#)

[education](#)

[business district](#)

[taxes](#) | [incentives](#)

[quality of life](#)

[transportation](#)

[utilities](#)

[key industries](#)

[commercial properties](#)

sub-navigation

[<< back](#)   [next >>](#)

[\[ exit \]](#)



# Locklin Technical Center



Operated under the authority of the Santa Rosa District School Board. LTC is a specialized post-secondary institution designed primarily to provide job preparatory and continuing education

Designed to meet the technical training needs of adults and the actual and anticipated employment needs of businesses and industry

[home](#)

[location](#) | [quick facts](#)

[labor force](#)

[demographics](#)

[education](#)

[business district](#)

[taxes](#) | [incentives](#)

[quality of life](#)

[transportation](#)

[utilities](#)

[key industries](#)

[commercial properties](#)

sub-navigation

[<< back](#)   [next >>](#)

[\[ exit \]](#)





# Achievement Scores FCAT - Reading

[home](#)

[location](#) | [quick facts](#)

[labor force](#)

[demographics](#)

[education](#)

[business district](#)

[taxes](#) | [incentives](#)

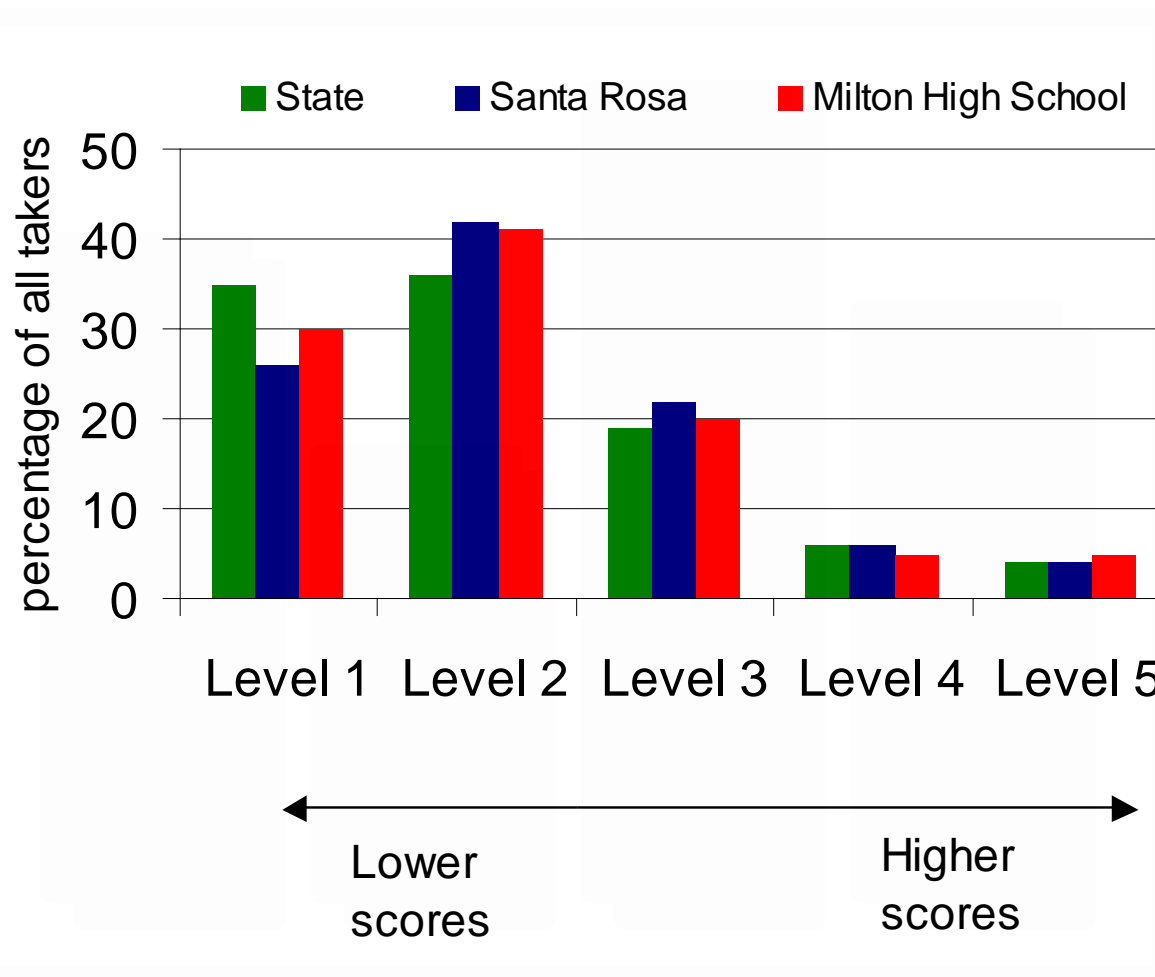
[quality of life](#)

[transportation](#)

[utilities](#)

[key industries](#)

[commercial properties](#)



sub-navigation

[<< back](#) [next >>](#)

[\[ exit \]](#)



# Achievement Scores

## FCAT - Math

[home](#)

[location](#) | [quick facts](#)

[labor force](#)

[demographics](#)

[education](#)

[business district](#)

[taxes](#) | [incentives](#)

[quality of life](#)

[transportation](#)

[utilities](#)

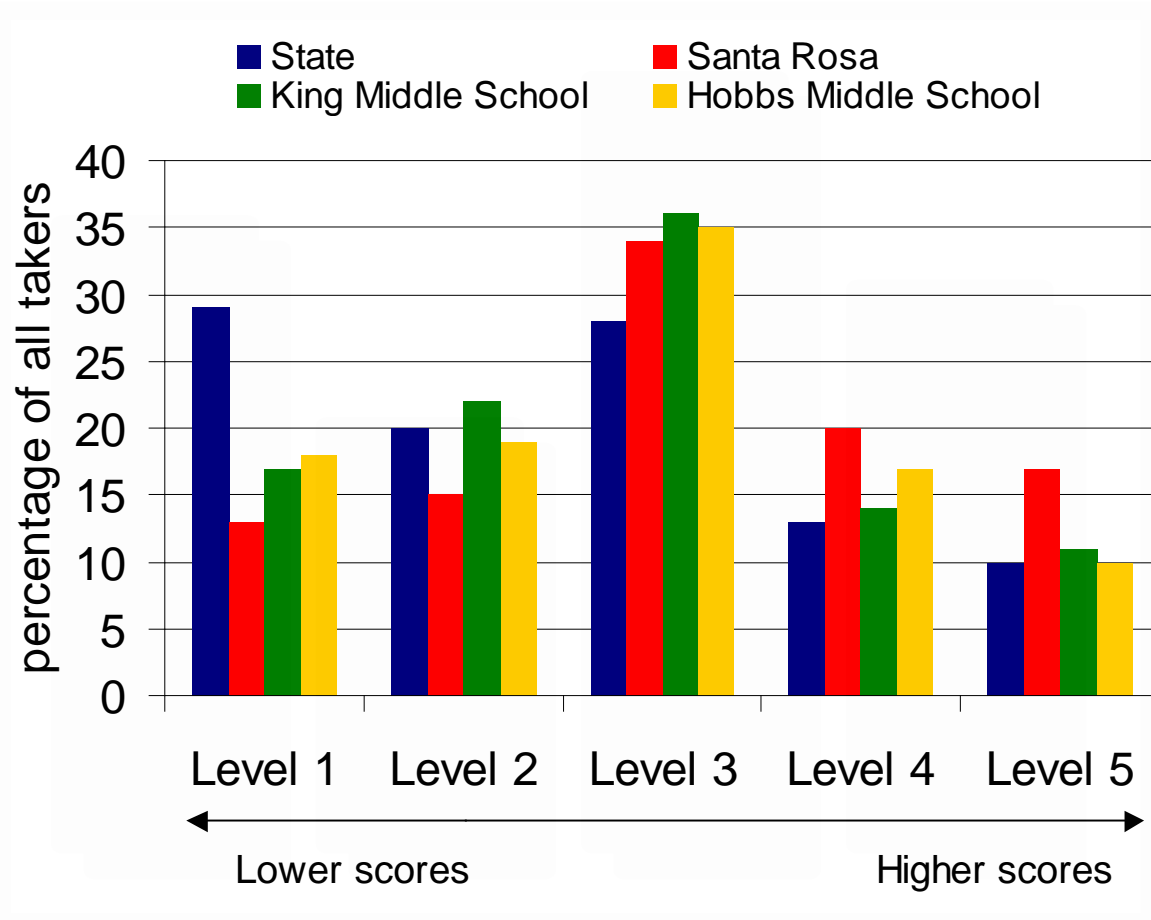
[key industries](#)

[commercial properties](#)

sub-navigation

[<< back](#)   [next >>](#)

[\[ exit \]](#)





## Business District



1. Downtown Milton
2. Six Flags Shopping Center
3. Commerce Park
4. Parkmore Plaza Shopping Center
5. Santa Rosa Industrial Park

[home](#)

[location](#) | [quick facts](#)

[labor force](#)

[demographics](#)

[education](#)

[business district](#)

[taxes](#) | [incentives](#)

[quality of life](#)

[transportation](#)

[utilities](#)

[key industries](#)

[commercial properties](#)

sub-navigation

[<< back](#)   [next >>](#)

[\[ exit \]](#)



## Historic Milton



Once home to 3 drugstores, 3 department stores, a hotel, hardware store, café and theaters, downtown Milton retains its historic charm and provides business owners the opportunity to occupy picturesque space on the banks of the Blackwater River. Residents still enjoy the many sights and sounds of Milton, including shops, food and entertainment at the Imogene Theater, a restored 1912 theater offering live on-stage performances. Riverwalk Park is the setting for many area festivals, including the juried Riverwalk Fine Arts Show, and is the perfect choice for an evening stroll.

**Main Street Milton** is proud to be designated a Florida Main Street Community. Working in conjunction with the Santa Rosa County Chamber of Commerce, City of Milton and Santa Rosa County, Main Street Milton strives to preserve the unique historical character of the downtown area while working to return the district to an active, lively community center with a strong economic base. The Main Street Milton Program actively promotes the downtown area through design, promotions, special events and business enhancement. Main Street Milton actively recruits quality retail businesses and provides hands-on assistance to businesses and property owners. Businesses within the Main Street Milton district are eligible for low-interest loans and grants for exterior improvements.

[home](#)[location](#) | [quick facts](#)[labor force](#)[demographics](#)[education](#)[business district](#)[taxes](#) | [incentives](#)[quality of life](#)[transportation](#)[utilities](#)[key industries](#)[commercial properties](#)[sub-navigation](#)[<< back](#)   [next >>](#)[\[ exit \]](#)



# Six Flags Shopping Center

[home](#)

[location](#) | [quick facts](#)

[labor force](#)

[demographics](#)

[education](#)

[business district](#)

[taxes](#) | [incentives](#)

[quality of life](#)

[transportation](#)

[utilities](#)

[key industries](#)

[commercial properties](#)



sub-navigation

[<< back](#)   [next >>](#)

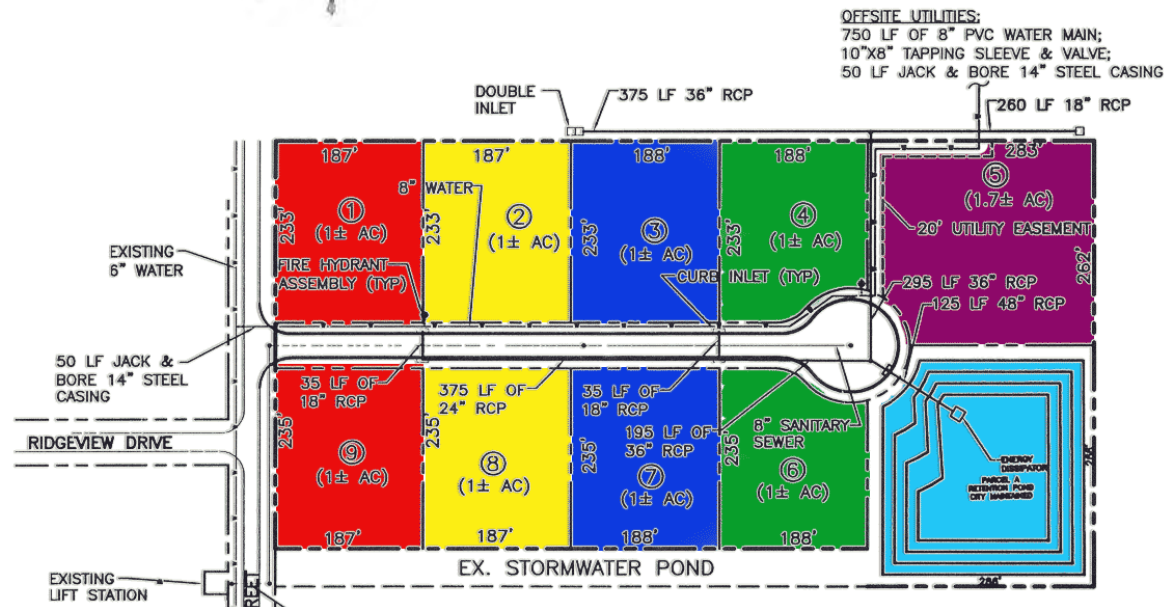
[\[ exit \]](#)





commercial properties

[ exit ]







## Parkmore Plaza



[home](#)

[location](#) | [quick facts](#)

[labor force](#)

[demographics](#)

[education](#)

[business district](#)

[taxes](#) | [incentives](#)

[quality of life](#)

[transportation](#)

[utilities](#)

[key industries](#)

[commercial properties](#)

sub-navigation

[<< back](#)   [next >>](#)

[\[ exit \]](#)



# Business District Profile



## Enterprise Zone

- Encompasses 16 square miles, including Santa Rosa County Industrial Park
- Along Highway 90 with access to I-10
- Credit against Sales Tax for Job Creation or Corporate Sales Tax Credit
- Property Tax Credit
- Building Materials Sales Tax Refund
- Business Equipment Sales Tax Refund

[home](#)

[location](#) | [quick facts](#)

[labor force](#)

[demographics](#)

[education](#)

[business district](#)

[taxes](#) | [incentives](#)

[quality of life](#)

[transportation](#)

[utilities](#)

[key industries](#)

[commercial properties](#)

sub-navigation

[<< back](#)   [next >>](#)

[\[ exit \]](#)



# Business District Profile

## Enterprise Zone

[home](#)

[location](#) | [quick facts](#)

[labor force](#)

[demographics](#)

[education](#)

[business district](#)

[taxes](#) | [incentives](#)

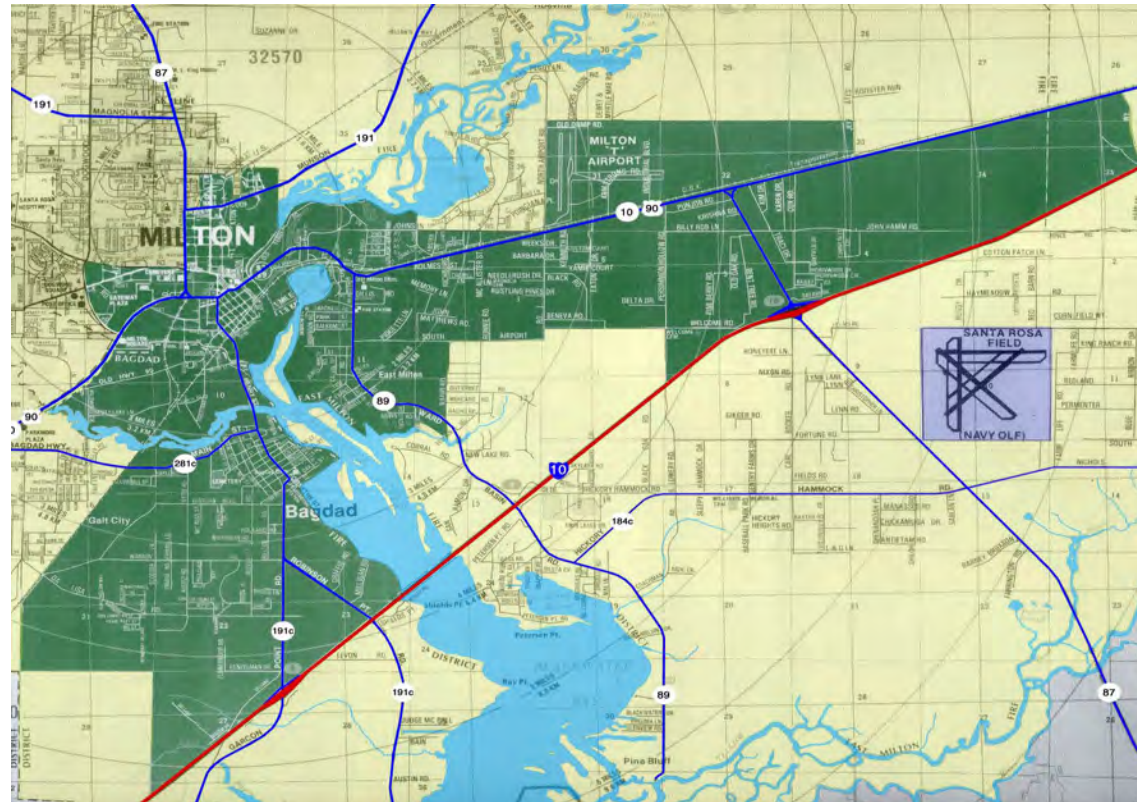
[quality of life](#)

[transportation](#)

[utilities](#)

[key industries](#)

[commercial properties](#)



sub-navigation

[<< back](#)   [next >>](#)

[\[ exit \]](#)





# Taxes

## State Corporate Tax

5.5%

## State/Local Sales Tax

6.5%

### Carpenters Park



home

location | quick facts

labor force

demographics

education

business district

taxes | incentives

quality of life

transportation

utilities

key industries

commercial properties

sub-navigation

<< back    next >>

[ exit ]



# Santa Rosa County Property Tax Rates

- home
- location | quick facts
- labor force
- demographics
- education
- business district
- taxes | incentives
- quality of life
- transportation
- utilities
- key industries
- commercial properties

City of Milton	2.75 mills
Santa Rosa County	6.6175 mills
Santa Rosa School Dist	8.117 mills
NW FL Water District	0.050 mills
Total	<b>17.5345 mills</b>

## Carpenters Park



sub-navigation

<< back    next >>

[ exit ]



# Milton, Florida Advantages

1. No state income tax
2. No corporate income tax on sub-chapter S corporations
3. First \$5000 of taxable income apportioned to Florida is exempt
4. No state property tax on inventory or equipment
5. No business inventory tax
6. No corporate franchise tax on capital stock

Fitness Trail



[home](#)

[location | quick facts](#)

[labor force](#)

[demographics](#)

[education](#)

[business district](#)

[taxes | incentives](#)

[quality of life](#)

[transportation](#)

[utilities](#)

[key industries](#)

[commercial properties](#)

sub-navigation

[<< back](#)   [next >>](#)

[\[ exit \]](#)





# Financing

- Florida First Capital Finance Corporation
  - SBA 504 Loan Program
- Export Financing and Assistance
- Enterprise Bonds: Tax-Exempt Financing
- Financial Assistance to Black Business
- Florida Energy Loan Program
- Rural Development Administration Revolving Loan Program



Milton Historic District

Complete summary  
of available  
[incentive packages >>](#)

home

location | quick facts

labor force

demographics

education

business district

taxes | incentives

quality of life

transportation

utilities

key industries

commercial properties

sub-navigation

<< back   next >>

[ exit ]



# Incentives



Complete summary  
of available  
[incentive packages >>](#)

home

location | quick facts

labor force

demographics

education

business district

taxes | incentives

quality of life

transportation

utilities

key industries

commercial properties

1. Community Contribution Tax Credit Program
2. Sales Tax Refund for Building Materials Used in an EZ
3. Tax Exemptions within the Aviation Industry
4. Capital Investment Tax Credit
5. Qualified Defense Contractor Tax Refund

sub-navigation

<< back    next >>

[ exit ]



# Incentives

home  
location | quick facts  
labor force  
demographics  
education  
business district  
taxes | incentives  
quality of life  
transportation  
utilities  
key industries  
commercial properties

6. High Impact Performance Incentive Grant
7. Incumbent Worker Training
8. Permit Streamlining Initiatives
9. Quick Response Training (QRT)
10. Rural Community Development
11. Revolving Loan Program
12. Silicon Technology Sales and Use Tax Exemption
13. Qualified Target Industry Tax Refund (QTI)
14. Sales and Use Tax Exemption On Machinery and Equipment
15. Economic Development Transportation Fund
16. Electricity -- exemption from an eight percent tax on your electric bill
17. Main Street Milton
18. Brownfield Redevelopment Bonus Refund



Complete summary  
of available  
[incentive packages >>](#)

sub-navigation

<< back   next >>  
[ exit ]



# Enterprise Zone

[home](#)

[location](#) | [quick facts](#)

[labor force](#)

[demographics](#)

[education](#)

[business district](#)

[taxes](#) | [incentives](#)

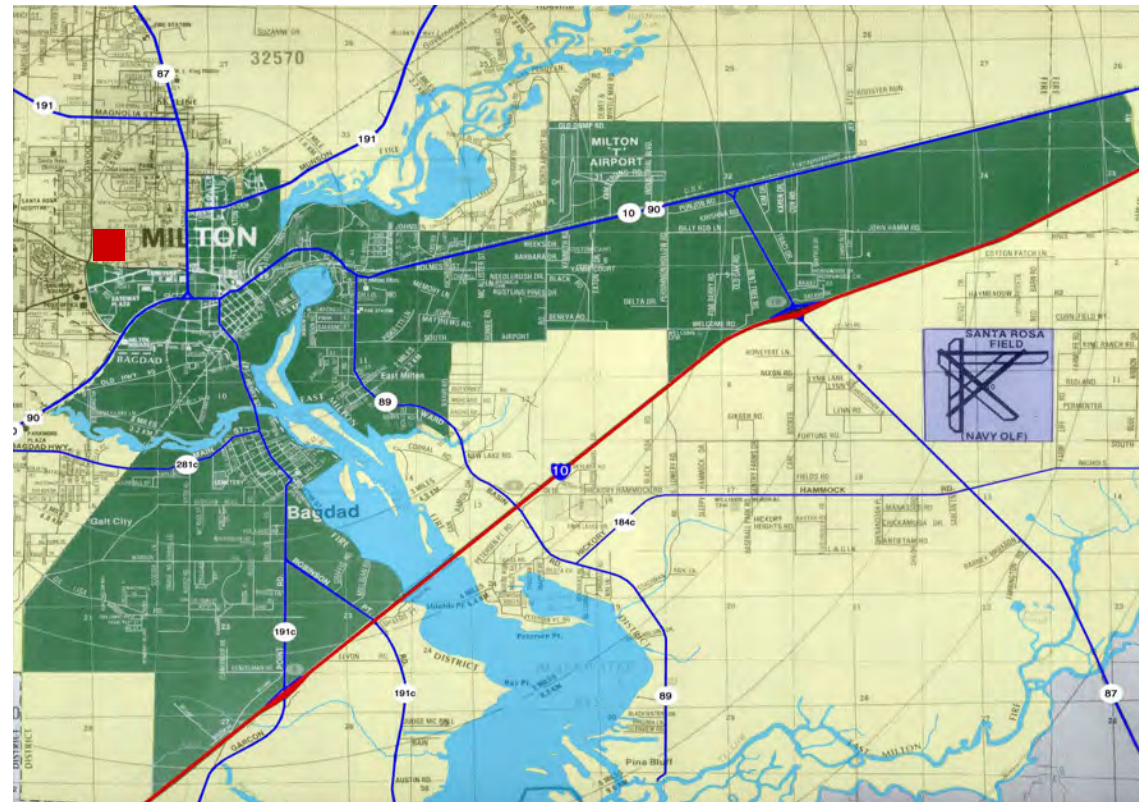
[quality of life](#)

[transportation](#)

[utilities](#)

[key industries](#)

[commercial properties](#)



sub-navigation

[<< back](#)   [next >>](#)

[\[ exit \]](#)

Complete summary  
of available  
incentive packages >>



# Enterprise Zone



- Encompasses 16 square miles, including Santa Rosa County Industrial Park
- Along Highway 90 with access to I-10
- Credit against Sales Tax for Job Creation or Corporate Sales Tax Credit
- Property Tax Credit
- Building Materials Sales Tax Refund
- Business Equipment Sales Tax Refund

[home](#)

[location](#) | [quick facts](#)

[labor force](#)

[demographics](#)

[education](#)

[business district](#)

[taxes](#) | [incentives](#)

[quality of life](#)

[transportation](#)

[utilities](#)

[key industries](#)

[commercial properties](#)

sub-navigation

[<< back](#)   [next >>](#)

[\[ exit \]](#)





# Brownfield Redevelopment Zones

[home](#)

[location | quick facts](#)

[labor force](#)

[demographics](#)

[education](#)

[business district](#)

[taxes | incentives](#)

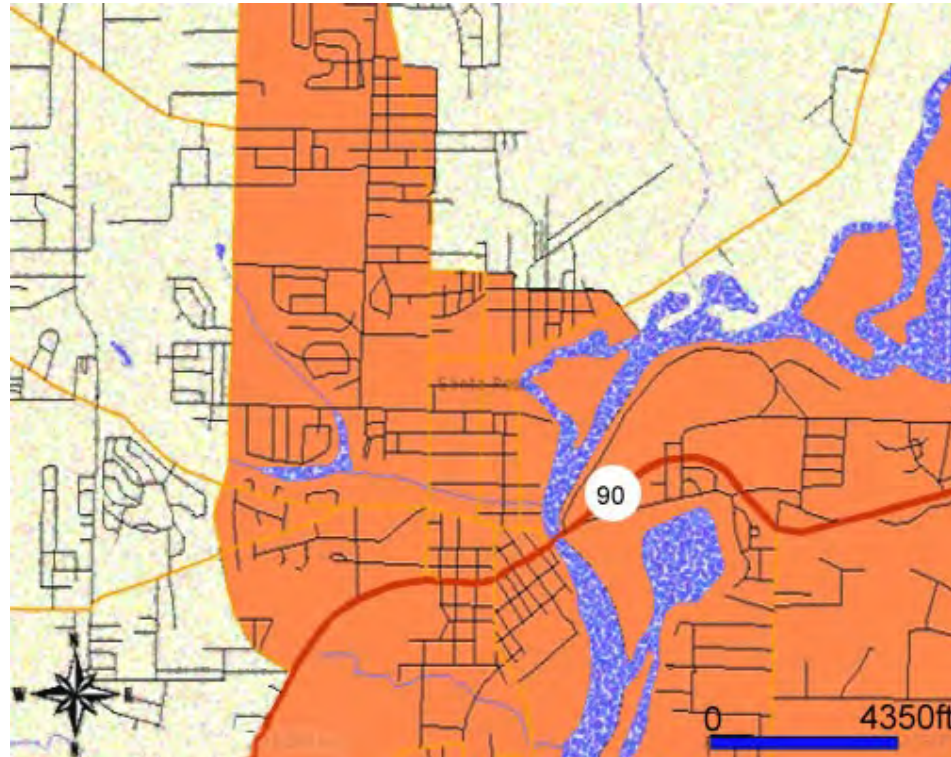
[quality of life](#)

[transportation](#)

[utilities](#)

[key industries](#)

[commercial properties](#)



Complete summary  
of available  
incentive packages >>

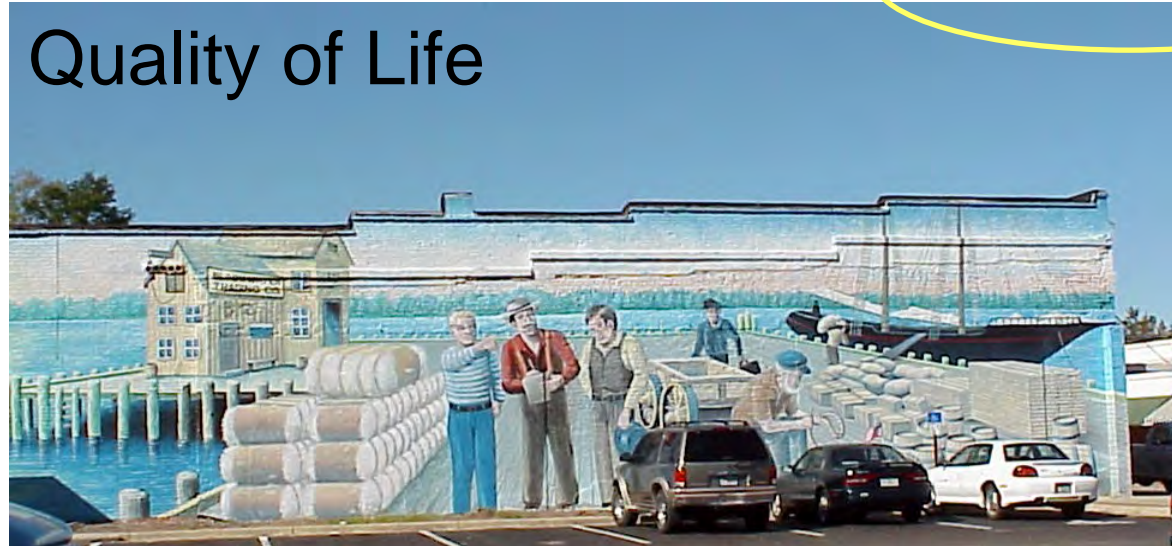
sub-navigation

<< back   next >>

[ exit ]



# Quality of Life



## Milton Mural Society

The Milton Mural Society, formed in 1998, is the culmination of community supporters dedicated to drawing a connection between Santa Rosa County's significant history and promising future. Outdoor mural projects are the link between these two periods of life in Milton and have served to enhance the charm of this historical city. With its rich culture, diverse industries and strong military presence, Milton has a wealth of historical and natural subjects that can be depicted in these murals. From the lumber industry's stacks of logs tied at the water's edge, to the baptismal in Blackwater River; from the Arcadia cotton mill to the seafood industry and military impact, Santa Rosa County has unlimited resources that reflect the culture and society it has become. The challenge that lies ahead for the Society is to find not only suitable locations and artists for these projects, but patrons willing to sponsor these beautiful works of art. Working together, the Society, artists and sponsors have the unique opportunity to share the heritage of the Milton area with the surrounding communities.

home

location | quick facts

labor force

demographics

education

business district

taxes | incentives

quality of life

transportation

utilities

key industries

commercial properties

sub-navigation

<< back   next >>

[ exit ]





# EASI Quality of Life Measurement

US = 100

EASI Quality of Life Index:	188
EASI Culture Index:	178
EASI Best Weather Index:	184

## ACCRA Cost of Living Index MSA

97 (US avg. =100)



US Army Reserve Center

[home](#)

[location](#) | [quick facts](#)

[labor force](#)

[demographics](#)

[education](#)

[business district](#)

[taxes](#) | [incentives](#)

[quality of life](#)

[transportation](#)

[utilities](#)

[key industries](#)

[commercial properties](#)

sub-navigation

[<< back](#)   [next >>](#)

[\[ exit \]](#)



# Climate & Housing

[home](#)

[location | quick facts](#)

[labor force](#)

[demographics](#)

[education](#)

[business district](#)

[taxes | incentives](#)

[quality of life](#)

[transportation](#)

[utilities](#)

[key industries](#)

[commercial properties](#)



## Climate

Annual Average temperature 67.7

Average low 59 - Average high 77

## Housing

EASI Housing Affordability Index: 79.3

US Average: 100

Milton offers a wide variety of housing options ranging from affordable to luxury, riverfront, secluded or suburban.

sub-navigation

[<< back](#)   [next >>](#)

[\[ exit \]](#)



# Quality of Life Measurement

## Access to City Services

Fire

Police

Safe, sustainable water supply

[home](#)

[location | quick facts](#)

[labor force](#)

[demographics](#)

[education](#)

[business district](#)

[taxes | incentives](#)

[quality of life](#)

[transportation](#)

[utilities](#)

[key industries](#)

[commercial properties](#)

sub-navigation

[<< back](#)   [next >>](#)

[\[ exit \]](#)



Fire – 3 minute average  
response time within Milton



# Quality of Life

The [Santa Rosa Medical Center's](#) services include:

24-hr Emergency Room Services

Surgical Services

Critical Care Unit

Radiology and Diagnostic Imaging

Laboratory Services

Business Health Services

Women's Health  
Services

Transitional Care Unit

Rehabilitation Services

Health Education

Santa Rosa Seniors

The ***Santa Rosa Medical Center*** is a state-of-the-art medical facility serving Milton and the surrounding area.



[home](#)

[location | quick facts](#)

[labor force](#)

[demographics](#)

[education](#)

[business district](#)

[taxes | incentives](#)

[quality of life](#)

[transportation](#)

[utilities](#)

[key industries](#)

[commercial properties](#)

sub-navigation

[<< back](#)   [next >>](#)

[\[ exit \]](#)





# Milton Worship Centers



First Presbyterian Church



First United Methodist



Mt. Pilgrim Baptist  
Church



St. Mary's Episcopal

[home](#)

[location](#) | [quick facts](#)

[labor force](#)

[demographics](#)

[education](#)

[business district](#)

[taxes](#) | [incentives](#)

[quality of life](#)

[transportation](#)

[utilities](#)

[key industries](#)

[commercial properties](#)

sub-navigation

[<< back](#)   [next >>](#)

[\[ exit \]](#)



# Milton Worship Centers



Isaiah Chapel AME Zion



First Baptist



St. Rose of Lima Catholic  
Church



Westminster  
Presbyterian on Park

Church of Christ



[home](#)

[location | quick facts](#)

[labor force](#)

[demographics](#)

[education](#)

[business district](#)

[taxes | incentives](#)

[quality of life](#)

[transportation](#)

[utilities](#)

[key industries](#)

[commercial properties](#)

sub-navigation

[<< back](#)   [next >>](#)

[\[ exit \]](#)



# Recreation

## Area Golf Courses

The Moors

Tanglewood Golf Club

Whiting Field Golf Course

Stonebrook Golf Club

## City Soccer, Football, Tennis & Basketball



[home](#)

[location](#) | [quick facts](#)

[labor force](#)

[demographics](#)

[education](#)

[business district](#)

[taxes](#) | [incentives](#)

[quality of life](#)

[transportation](#)

[utilities](#)

[key industries](#)

[commercial properties](#)

sub-navigation

[<< back](#)   [next >>](#)

[\[ exit \]](#)





# Culture and Attractions

[home](#)  
[location](#) | [quick facts](#)  
[labor force](#)  
[demographics](#)  
[education](#)  
[business district](#)  
[taxes](#) | [incentives](#)  
[quality of life](#)  
[transportation](#)  
[utilities](#)  
[key industries](#)  
[commercial properties](#)

Numerous venues for stage plays, museums, ballet, symphony, art galleries, festivals, concerts. Historic districts in Milton and Pensacola.

**Semi-Pro Hockey** Ice  
Pilots Hockey

**The Zoo** - Natural habitat  
zoo with over 700  
animals.

**Movie Theatres** - 7  
theatres with numerous  
screens, including an  
IMAX theater

Northwest Florida **Ballet**



sub-navigation

[<< back](#)   [next >>](#)

[\[ exit \]](#)



# Transportation

## Highways

Interstate 10

Highway 90

Easy Access to Interstate 65



## Rail Freight CSX

cargo volume 750-1000 cars per  
day

## Passenger Rail- Amtrak

[home](#)

[location | quick facts](#)

[labor force](#)

[demographics](#)

[education](#)

[business district](#)

[taxes | incentives](#)

[quality of life](#)

[transportation](#)

[utilities](#)

[key industries](#)

[commercial properties](#)

sub-navigation

[<< back](#)   [next >>](#)

[\[ exit \]](#)



# Driving distance



home

location | quick facts

labor force

demographics

education

business district

taxes | incentives

quality of life

transportation

utilities

key industries

commercial properties

sub-navigation

<< back    next >>

[ exit ]



# Transportation

## Commercial Airports

Pensacola Regional Airport (20 miles)  
([www.flypensacola.com](http://www.flypensacola.com)) served by Delta,  
US Airways, US Airways Express, Comair,  
Continental, Northwest Air Link & AirTran

## General Aviation

Peter Prince Field is adjacent to Santa Rosa  
County Industrial Park and has a lighted  
3700' hard surface runway and a GPS  
instrument approach

[home](#)

[location | quick facts](#)

[labor force](#)

[demographics](#)

[education](#)

[business district](#)

[taxes | incentives](#)

[quality of life](#)

[transportation](#)

[utilities](#)

[key industries](#)

[commercial properties](#)

sub-navigation

[<< back](#)   [next >>](#)

[\[ exit \]](#)



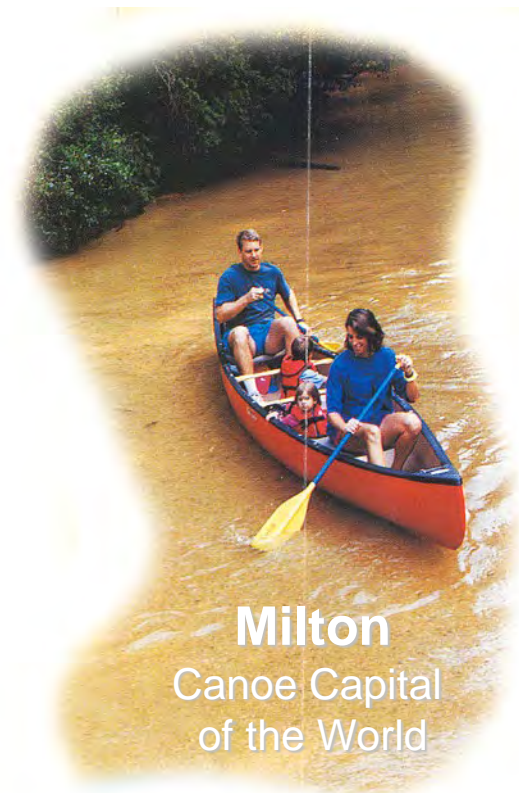
# Transportation

## Ports

- Port of Pensacola
- Port of Panama City
- Port of Mobile

## Navigable Waterways

- Intracoastal Waterway
- Escambia River
- Blackwater River
- Gulf of Mexico



[home](#)

[location | quick facts](#)

[labor force](#)

[demographics](#)

[education](#)

[business district](#)

[taxes | incentives](#)

[quality of life](#)

[transportation](#)

[utilities](#)

[key industries](#)

[commercial properties](#)

sub-navigation

[<< back](#)   [next >>](#)

[\[ exit \]](#)





# Traffic Counts for Major Roadways

Milton U.S. 90 at Dogwood Dr.	30,000
Milton U.S. 90 at Caroline St.	25,000



Source: Florida Dept of Transportation, West Florida Regional Planning Council, Metropolitan Planning Council and Santa Rosa County

[home](#)

[location](#) | [quick facts](#)

[labor force](#)

[demographics](#)

[education](#)

[business district](#)

[taxes](#) | [incentives](#)

[quality of life](#)

[transportation](#)

[utilities](#)

[key industries](#)

[commercial properties](#)

sub-navigation

[<< back](#)   [next >>](#)

[\[ exit \]](#)



# Utilities

**Electric**  
Gulf Power Company

**Gas**  
Natural Gas of Milton

**Telecommunications**  
Bell South

**Water/Sewer**  
City of Milton



**Award winning service**

Process Control & Field Monitoring  
Equipment Maintenance  
Management  
Laboratory Management  
Pollution Prevention  
Residuals Management  
Septage Management  
Toxic Waste Controls  
Collection System Controls  
Collection System Maintenance  
Financial Management  
Public Education  
Automation  
Safety Education

QUALITY

- home
- location | quick facts
- labor force
- demographics
- education
- business district
- taxes | incentives
- quality of life
- transportation
- utilities
- key industries
- commercial properties

sub-navigation

<< back    next >>  
[ exit ]





# Wastewater Treatment Plant

Milton has operated a wastewater treatment facility since the early 1950's. IN 1984 a new oxidation ditch facility was constructed to replace the existing treatment facility and has been in operation since. The current facility contains screening, grit removal, a 2.5-MGD oxidation ditch with 2 surface aerators, 2 secondary clarifiers, chlorine contact chamber, and cascade aeration. The facility also has residuals handling units, including two aerobic digesters and drying beds, for the settled solids removed from the process.

The treatment plant operators successfully perform the treatment plant operation and maintenance duties in a responsible and professional manner consistent with standard operating practices in order to meet or exceed State standards and rules, as well as protect the public health, safety and welfare, as well as the surrounding environment. Operators of the City of Milton Wastewater Treatment Plant have 3 primary goals:

- 1.to produce the best effluent quality possible
- 2.to protect the quality of the Blackwater River
- 3.to provide high quality treatment at the lowest possible cost to the citizens of Milton and the users of the facility.



## Award winning service

Process Control & Field Monitoring  
Equipment Maintenance  
Management  
Laboratory Management  
Pollution Prevention  
Residuals Management  
Septage Management  
Toxic Waste Controls  
Collection System Controls  
Collection System Maintenance  
Financial Management  
Public Education  
Automation  
Safety Education

QUALITY

[home](#)

[location | quick facts](#)

[labor force](#)

[demographics](#)

[education](#)

[business district](#)

[taxes | incentives](#)

[quality of life](#)

[transportation](#)

[utilities](#)

[key industries](#)

[commercial properties](#)

sub-navigation

[<< back](#)   [next >>](#)

[\[ exit \]](#)



- home
- location | quick facts
- labor force
- demographics
- education
- business district
- taxes | incentives
- quality of life
- transportation
- utilities**
- key industries
- commercial properties

## Utilities

Gulf Power Company, a subsidiary of Southern Co, is an investor-owned electric utility serving 368,614 customers in 71 towns and communities in Northwest Florida, from the Alabama border on the north to the Gulf of Mexico on the south; from the Alabama border on the west to the Apalachicola River on the east.

Gulf Power's generating capacity is 2,188,150 KW and the company maintains 118 substations, 1,560 miles of transmission line and 6,584 miles of distribution line of which 1,097 is underground. Gulf Power has a net investment of \$791 million in facilities within its service area alone, plus an additional \$231 million in neighboring states. Gulf Power consistently has the lowest electric rates among investor-owned utilities in Florida and among the lowest of all utilities nationwide.



sub-navigation

<< back   next >>

[ exit ]

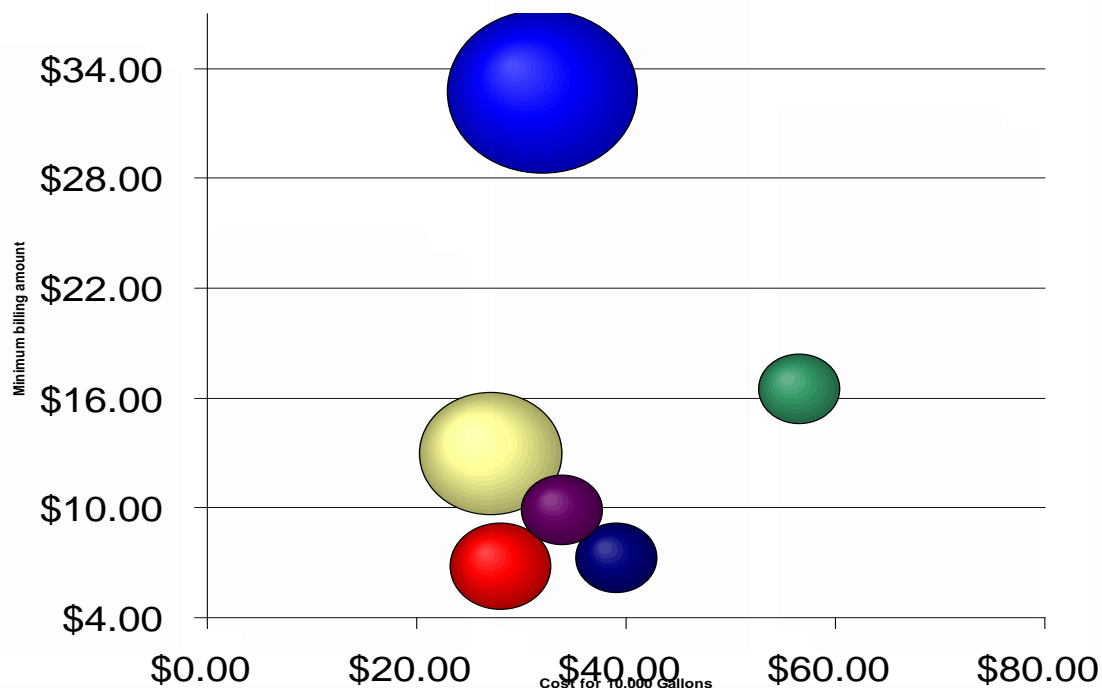




# Residential Sewer Rate Comparison February 2001

- home
- location | quick facts
- labor force
- demographics
- education
- business district
- taxes | incentives
- quality of life
- transportation
- utilities
- key industries
- commercial properties

● Century      ● Crestview      ● E.C.U.A.  
● City of Milton      ● Pace Water System      ● Regional



Bubble size = # gallons included in minimum bill  
(except for E.C.U.A. which includes 0 gallons)

sub-navigation

<< back    next >>

[ exit ]



# Residential Water Rate Comparison February 2001

[home](#)

[location](#) | [quick facts](#)

[labor force](#)

[demographics](#)

[education](#)

[business district](#)

[taxes](#) | [incentives](#)

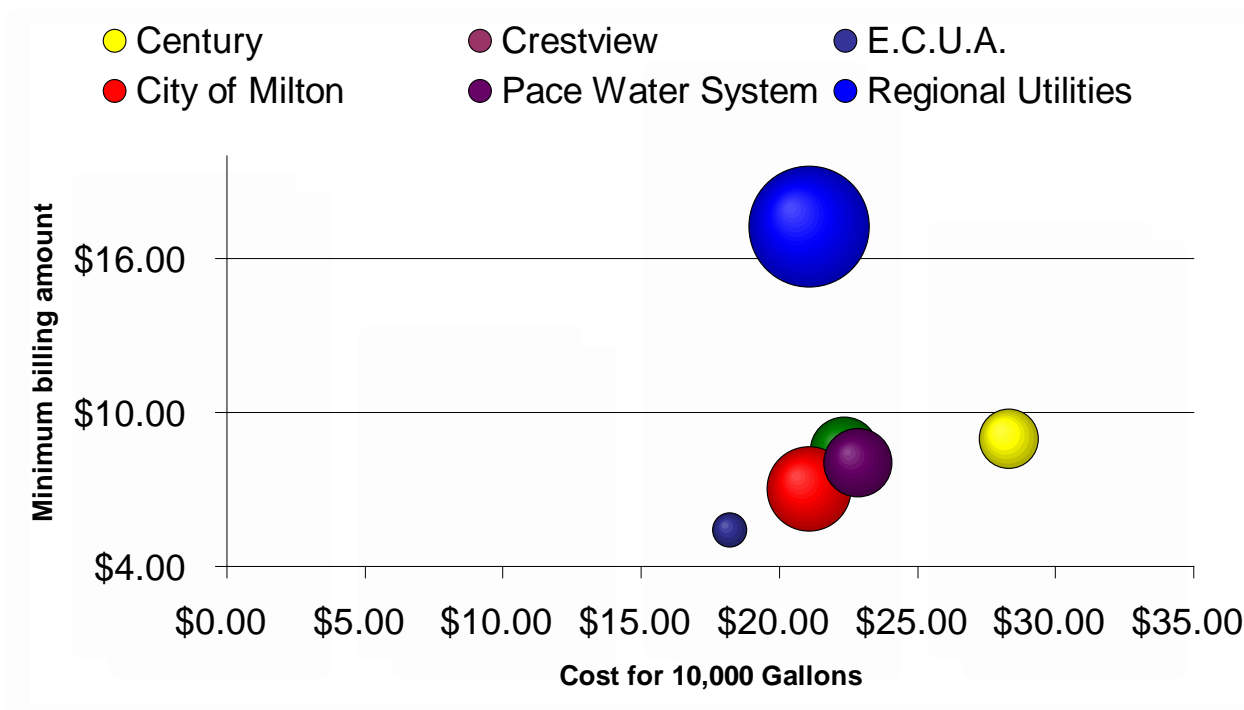
[quality of life](#)

[transportation](#)

[utilities](#)

[key industries](#)

[commercial properties](#)



Bubble size = # gallons included in minimum bill  
(except for E.C.U.A. which includes 0 gallons)

sub-navigation

[<< back](#)   [next >>](#)

[\[ exit \]](#)



# Key Industries

## Aerospace & defense

NAS Whiting Field - provides support services and materials for a training air wing and five training squadrons are providing primary and intermediate training of fixed-wing aviation and advanced helicopter training to student aviators.



## Government

Santa Rosa County Courthouse in Milton, FL. Located in the Historic Downtown Milton, a "Main Street Florida" designated area.



## Medical services

The ***Santa Rosa Medical Center*** is a state-of-the-art medical facility serving the City of Milton, Santa Rosa County and the surrounding areas.



[home](#)

[location | quick facts](#)

[labor force](#)

[demographics](#)

[education](#)

[business district](#)

[taxes | incentives](#)

[quality of life](#)

[transportation](#)

[utilities](#)

[key industries](#)

[commercial properties](#)

sub-navigation

[<< back](#)   [next >>](#)

[\[ exit \]](#)



# Key Industries

[home](#)

[location](#) | [quick facts](#)

[labor force](#)

[demographics](#)

[education](#)

[business district](#)

[taxes](#) | [incentives](#)

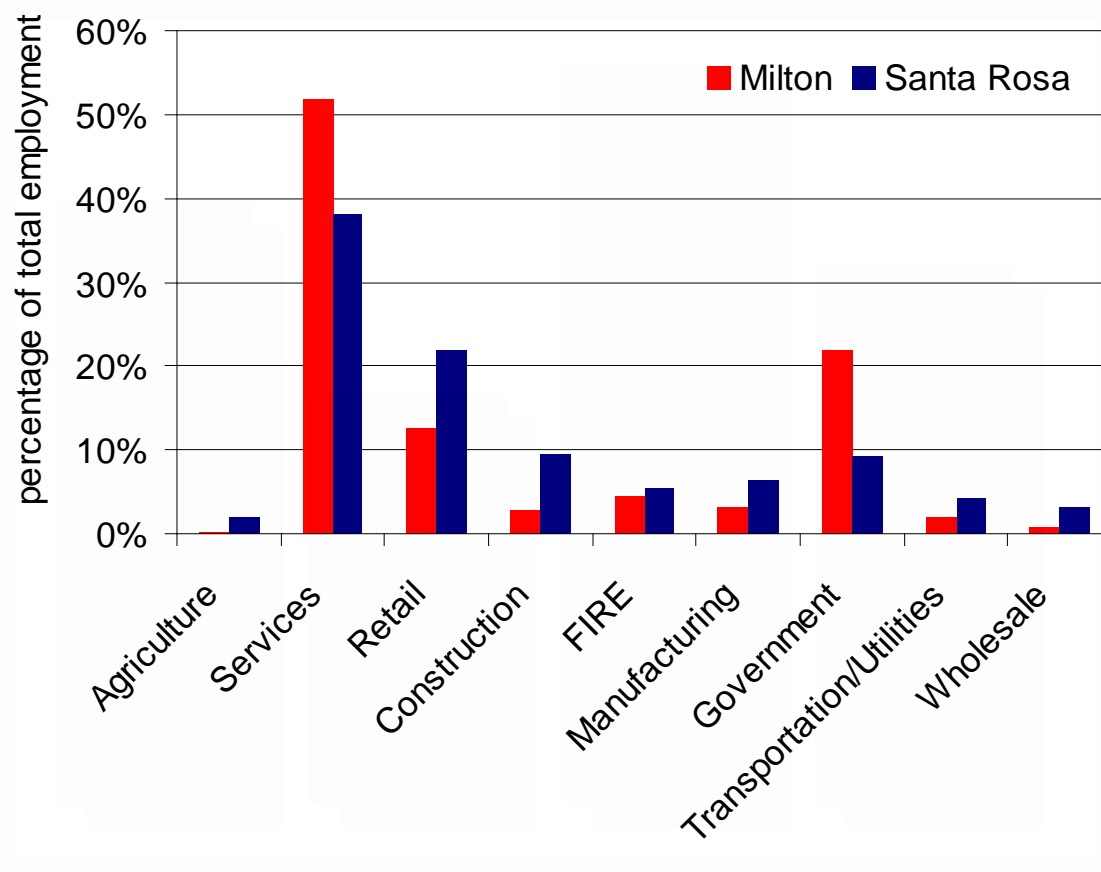
[quality of life](#)

[transportation](#)

[utilities](#)

[key industries](#)

[commercial properties](#)



sub-navigation

[<< back](#)   [next >>](#)

[\[ exit \]](#)





# Service Industry

[home](#)

[location](#) | [quick facts](#)

[labor force](#)

[demographics](#)

[education](#)

[business district](#)

[taxes](#) | [incentives](#)

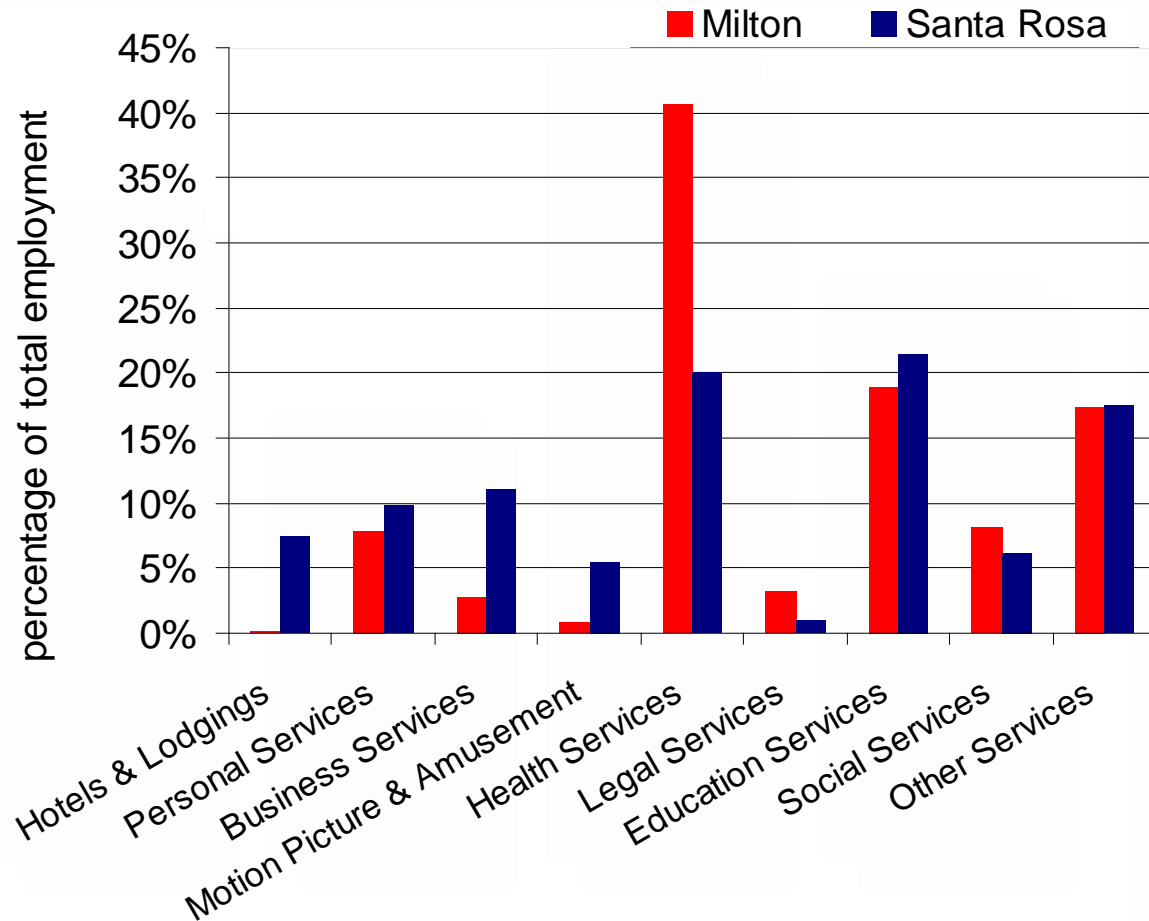
[quality of life](#)

[transportation](#)

[utilities](#)

[key industries](#)

[commercial properties](#)



sub-navigation

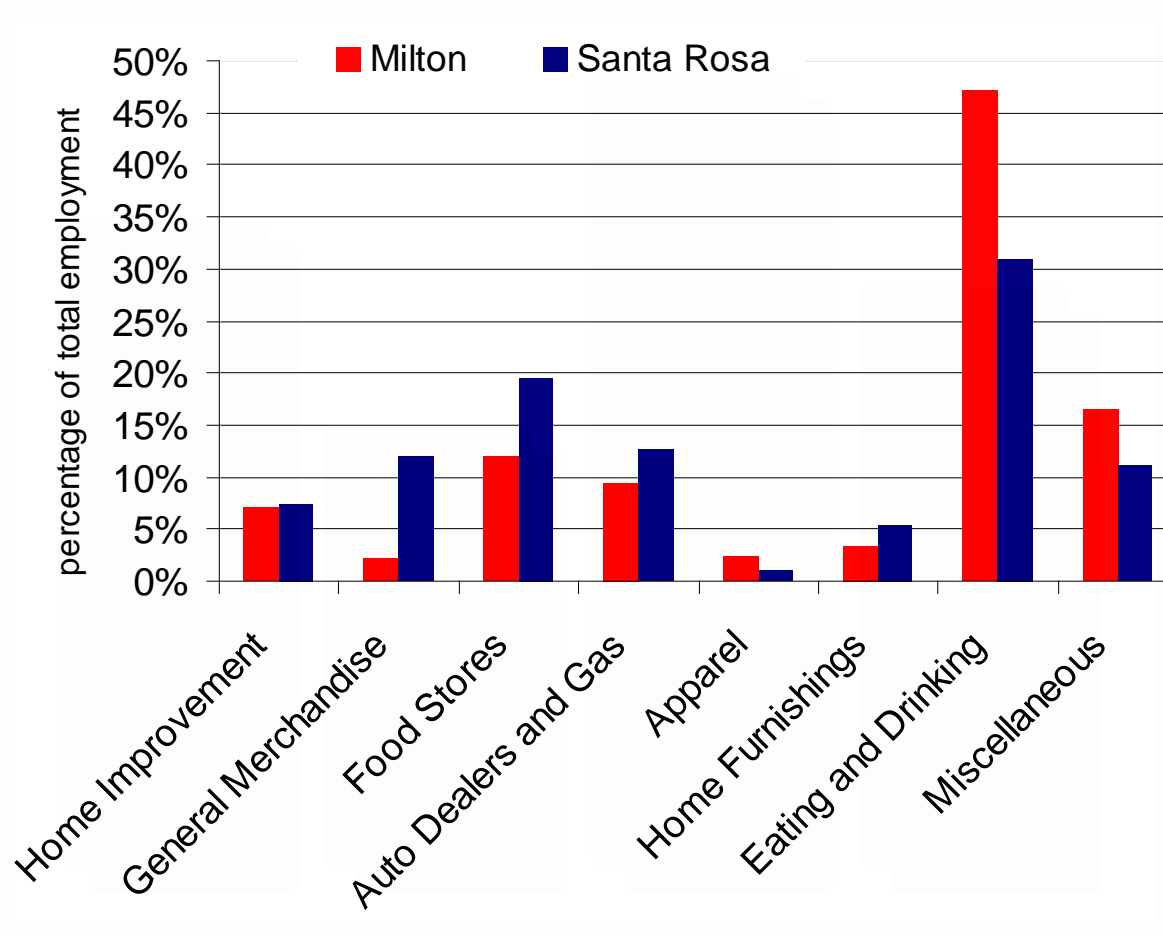
[<< back](#)   [next >>](#)

[\[ exit \]](#)



# Retail Industry

- home
- location | quick facts
- labor force
- demographics
- education
- business district
- taxes | incentives
- quality of life
- transportation
- utilities
- key industries
- commercial properties



sub-navigation

<< back    next >>

[ exit ]



6860 Caroline St.



5420 Willing St. riverfront



6854 Caroline St.



5432 Willing St. riverfront



6691 Caroline St.



6695 Caroline St.



- home
- location | quick facts
- labor force
- demographics
- education
- business district
- taxes | incentives
- quality of life
- transportation
- utilities
- key industries
- commercial properties

sub-navigation

<< back   next >>  
[ exit ]



- home
- location | quick facts
- labor force
- demographics
- education
- business district
- taxes | incentives
- quality of life
- transportation
- utilities
- key industries
- commercial properties



5746 Stewart St.



5156 Santa Rosa St.



5756 Stewart St.



6835 Caroline St.

sub-navigation

<< back   next >>

[ exit ]





## Caroline & Escambia Old Post Office



## 5165 Canal St.



## 200 Elmira St.



## 410 Elmira St.



home

location | quick facts

labor force

demographics

education

business district

taxes | incentives

quality of life

transportation

utilities

key industries

commercial properties

sub-navigation

<< back   next >>

[ exit ]





[home](#)

[location](#) | [quick facts](#)

[labor force](#)

[demographics](#)

[education](#)

[business district](#)

[taxes](#) | [incentives](#)

[quality of life](#)

[transportation](#)

[utilities](#)

[key industries](#)

[commercial properties](#)



Previous Post Office Branch 6742 Caroline



Caroline & Escambia



Stewart St. & Magnolia

sub-navigation

[<< back](#) [next >>](#)

[\[ exit \]](#)



[home](#)

[location](#) | [quick facts](#)

[labor force](#)

[demographics](#)

[education](#)

[business district](#)

[taxes](#) | [incentives](#)

[quality of life](#)

[transportation](#)

[utilities](#)

[key industries](#)

[commercial properties](#)

## 6 Flags Shopping Center



sub-navigation

[<< back](#)   [next >>](#)

[\[ exit \]](#)



[home](#)

[location](#) | [quick facts](#)

[labor force](#)

[demographics](#)

[education](#)

[business district](#)

[taxes](#) | [incentives](#)

[quality of life](#)

[transportation](#)

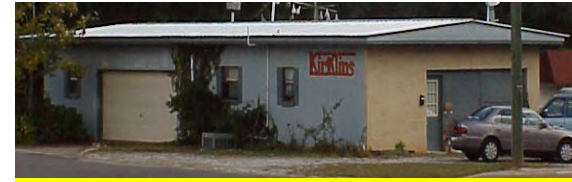
[utilities](#)

[key industries](#)

[commercial properties](#)



Stewart|Hinote lot



5770 Stewart St.



5763 Stewart St.



5739 Stewart St.

sub-navigation

[<< back](#)   [next >>](#)

[\[ exit \]](#)





home

location | quick facts

labor force

demographics

education

business district

taxes | incentives

quality of life

transportation

utilities

key industries

commercial properties



5484 Stewart St.



5347 Stewart St.



5412 Stewart St.



5347 Stewart St.



5262 Stewart St.



5341 Stewart St.

sub-navigation

<< back next >>

[ exit ]



- home
- location | quick facts
- labor force
- demographics
- education
- business district
- taxes | incentives
- quality of life
- transportation
- utilities
- key industries
- commercial properties



6674 Elva St.



5514 Stewart St.



1500 Berryhill Rd.



5518 Stewart St.



6692 Berryhill Rd.



5179 Stewart St.

sub-navigation

<< back   next >>

[ exit ]





home

location | quick facts

labor force

demographics

education

business district

taxes | incentives

quality of life

transportation

utilities

key industries

commercial properties

sub-navigation

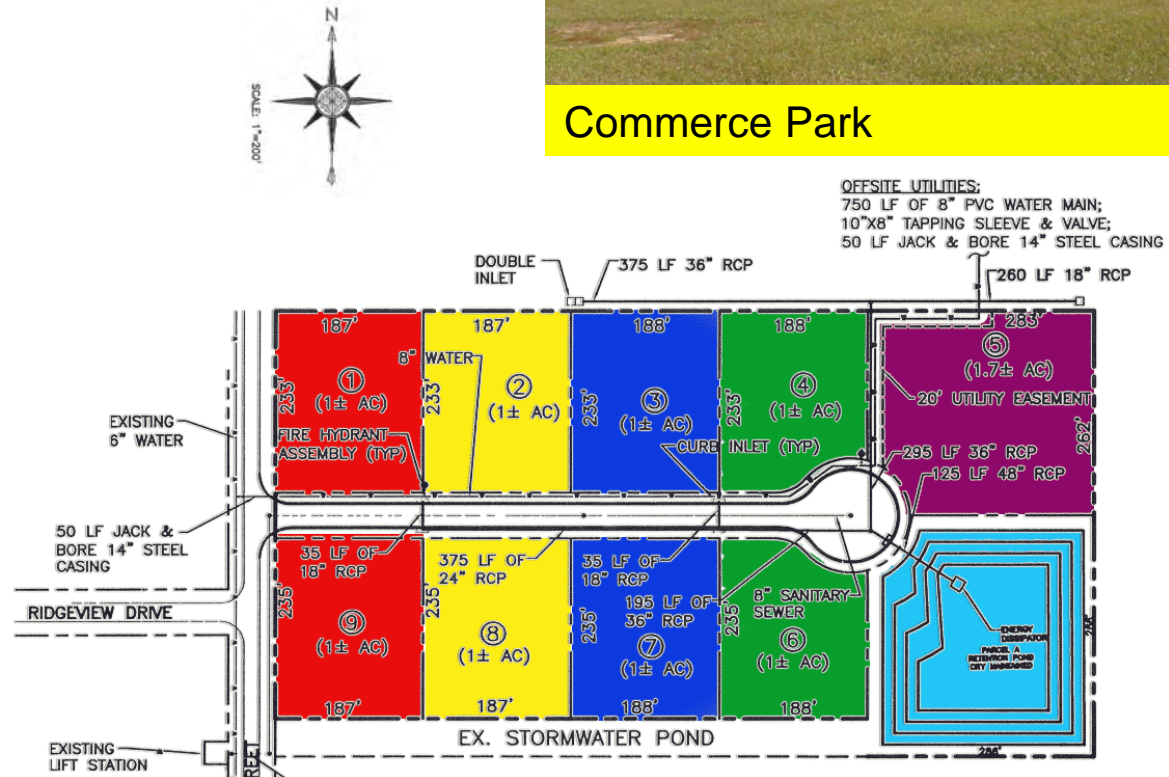
<< back next >>

[ exit ]

Summary



Commerce Park





[home](#)

[location](#) | [quick facts](#)

[labor force](#)

[demographics](#)

[education](#)

[business district](#)

[taxes](#) | [incentives](#)

[quality of life](#)

[transportation](#)

[utilities](#)

[key industries](#)

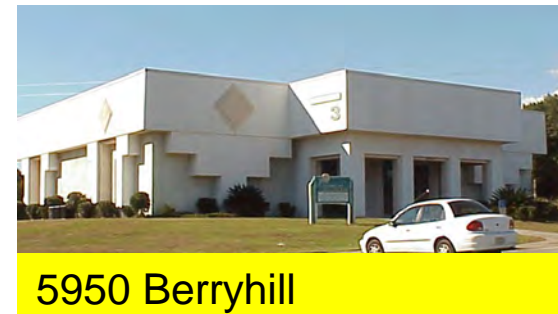
[commercial properties](#)



Berryhill



Berryhill & Dogwood



5950 Berryhill

sub-navigation

[<< back](#)   [next >>](#)

[\[ exit \]](#)



home  
location | quick facts  
labor force  
demographics  
education  
business district  
taxes | incentives  
quality of life  
transportation  
utilities  
key industries  
commercial properties

**We look  
forward to  
your visit.**

**850-983-5400**

**Donna Adams**  
**Citymanager@ci.milton.fl.us**  
**<http://www.ci.milton.fl.us/>**



sub-navigation

<< back    next >>

[ exit ]